



# THE NATIONAL PIPE ARCHIVE

Registered Charity Number 1043065

**Accession Number:** LIVNP 2012.06.232

**Description:** Note book containing drawings and descriptions of various makers marks compiled by David Atkinson (pages numbered 63-98).

**Comments:**

**Key Words:** Clay tobacco pipe; Southampton; Fareham; Portsmouth; Lymington; Newport;

**Scanned:** PDF 14 December 2016

Any images in this PDF must not be lent, copied to another party, sold or reproduced in any way without prior permission from the National Pipe Archive and the copyright owner, if applicable. Reproduction or publication in any medium is expressly forbidden without written authorisation and should include an acknowledgement worded 'Courtesy of the National Pipe Archive' and quoting the relevant accession number.

Southampton: ex-Pusey Coll. Given by Mr Adelman-Smith

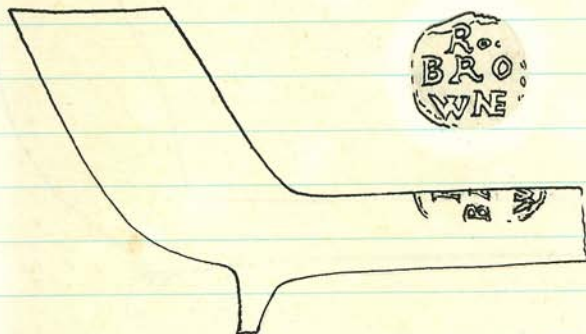
Portsmouth: given by Ken Barton

Roger Browne

Southampton

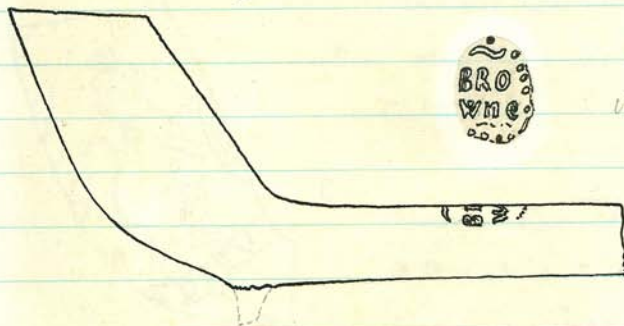
1753-74

63



(1)

incuse



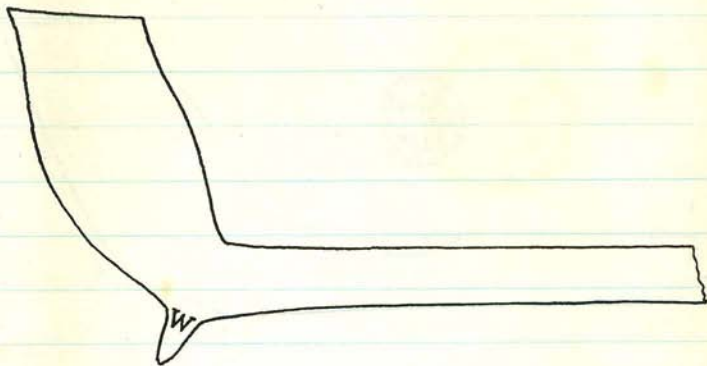
(2)

incuse

These pipes look earlier, c. 1720-40, than dates given. Example at Southampton museum is London type with initials at sides of small base, with stamp (1) on stem.

See also page 86.

LINNP 2012.06.232

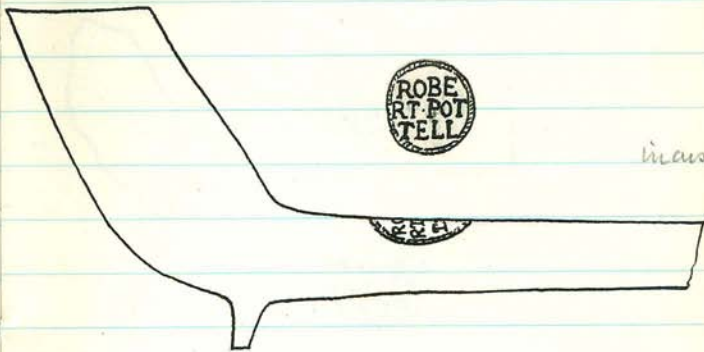
William BrowneSouthampton1753-87

Unusual type with  
thin stem and upright  
initials.



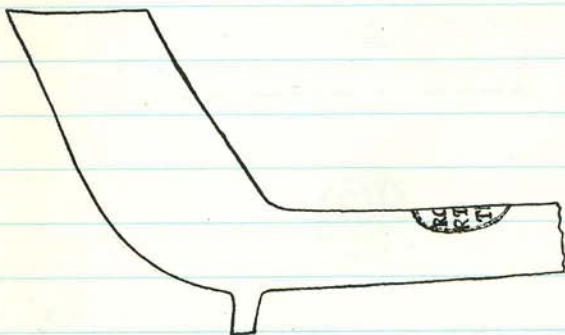
Armorial type with  
G R and initials  
sideways. Two or  
three moulds.

Plain, more straight-sided bowls with the  
spur also have large serif W/B.

Robert PottellParcham1711

in case

Examples from Portsmouth (Oyster Street). c1700-20

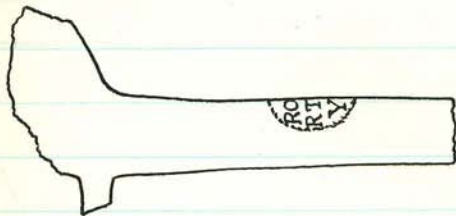


Also found at Amundel

Southampton Woolwich Dockyard!

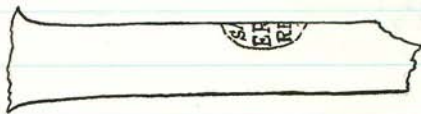
Probably used Richard Hoar's Kiln, c1720-30.



Robert SayerPortsmouth area.c.1720

in use

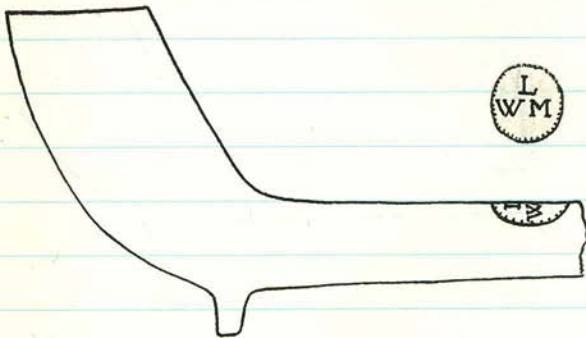
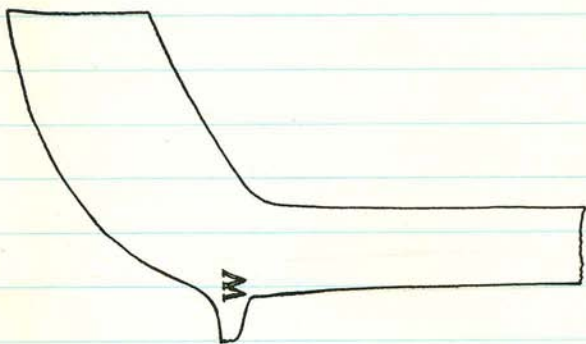
Fine polished pipe. Oyster street.



in use

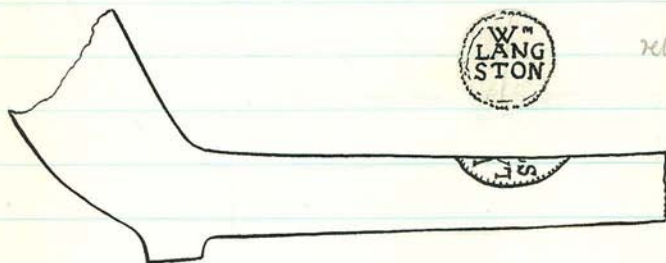
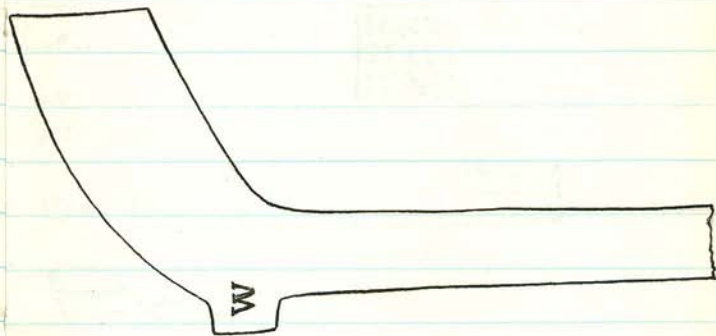
Sayer/Fareham. Probably the same maker.

Fine polished pipe. Same mark occurs on a late heel at Winchester.

William LangstonPortsmouth(Oyster St kiln site)c. 1720-40.

relief

South Eastern bowl shape but Wiltshire type  
 Spur. Moulded initials or stamped 3 letter  
 mark (husband and wife).

William LangstonPortsmouthc.1720-40

relief

*London type with initials or stamped mark.**Spur type also has these marks*

relief

*Similar mark with plain border.*

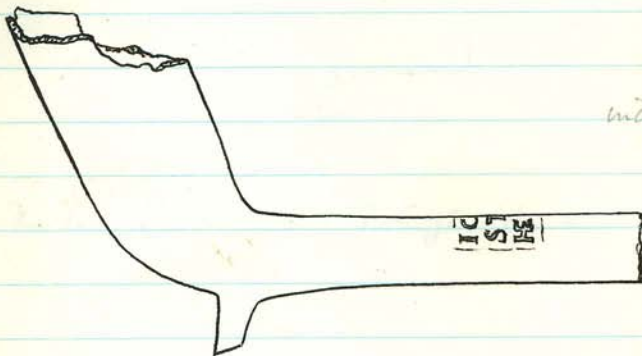
John Stephens

Newport 10W 1751

c 1750PortsmouthSouthamptonCanadaEastbourneJOHN  
STEP  
HENS

incuse

Oyster St.

JOHN  
STEP  
HENS

incuse

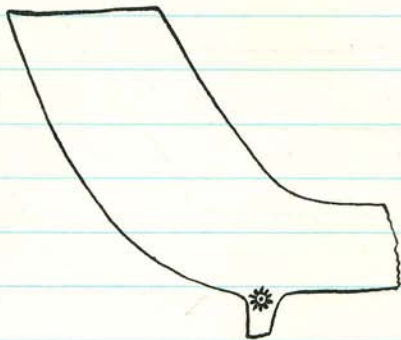
Fairly thin stems and tall brittle bowls  
indicate mid-eighteenth century.

Also found on thick stems, c. 1700-20.

There are slight variations in the size  
of lettering in this mark, which is  
usually unframed.

JOHN  
STEP  
HENS

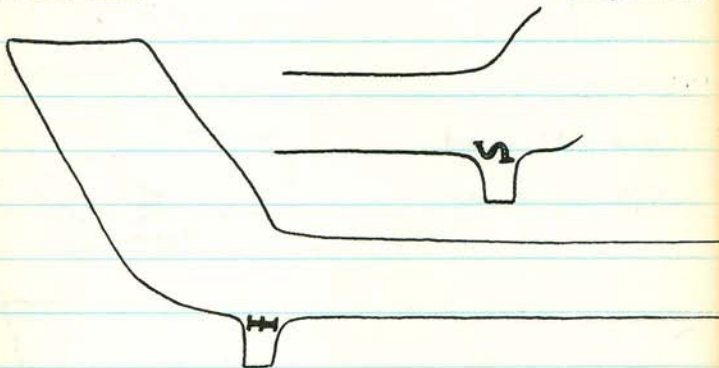


Unknown maker.c 1720-40PortsmouthOyster Street.

This type also occurred at Torkington (Amund).

Portsmouth

c1700-20

c.1720-40

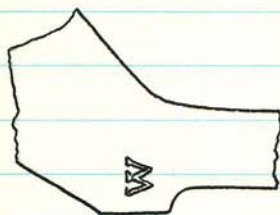
Unknown maker. Molded initials.

(Oyster Street site)

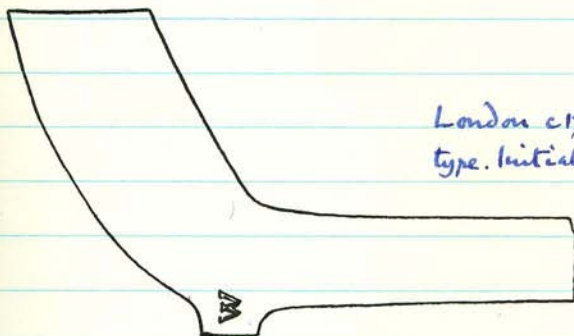
Possibly early John Stephens.

W. S.c.1700-40

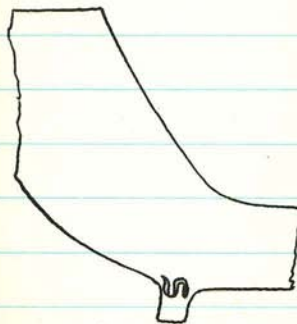
Portsmouth  
(Oyster Street pit)



London William III  
type. Initials W/S.



London c1720-40  
type. Initials W/S.



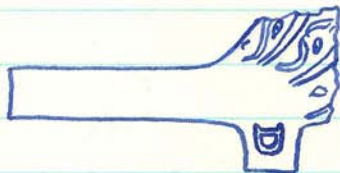
Spur type with  
initials S/W.

c 1720-40

See also p.76.

T.DPortsmouth

(South Sea garden)

c. 1800-20

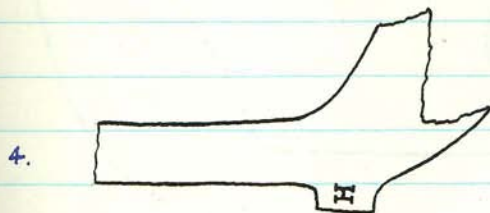
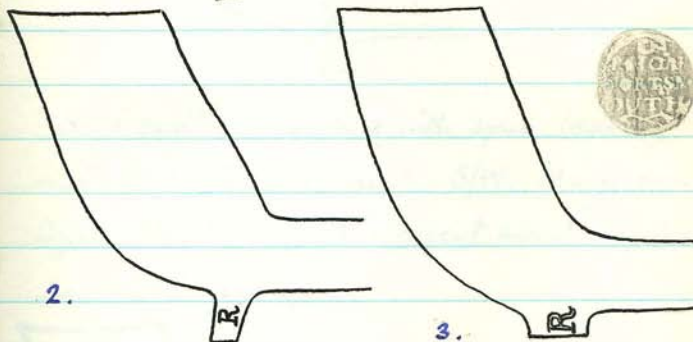
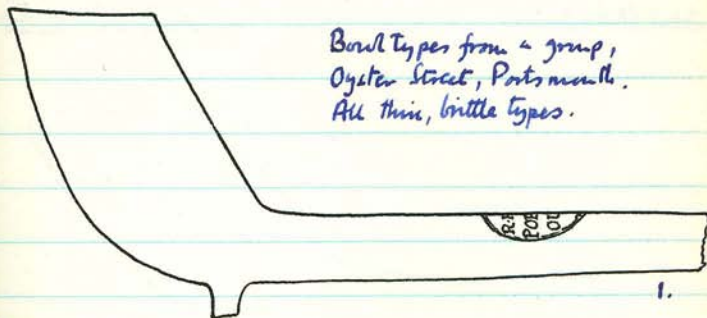


S.C.Portsmouth.Probably Samuel Clayc.1840

Southsea grinders

R. HoarPortsmouthC1715-1750

Bowl types from a group,  
Oyster Street, Portsmouth.  
All thin, brittle types.

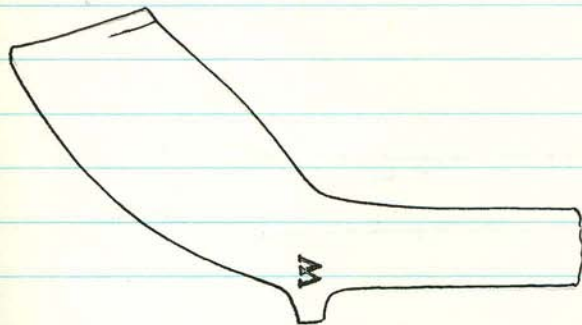


1. Late Wiltshire type.  
No initials.

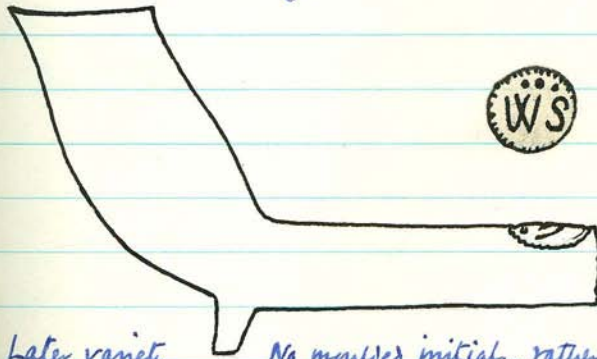
2. c. 1730-50 with  
initials. Some  
have stem mark,  
others not.

3 & 4. London  
type with large  
or small initials.

See also page 9 and 91.

W.S.Portsmouth  
additional type.c 1690-1710

South east/London type with spur, bearing initials W/S, some with S/W. Many from Oyster street, several different moulds, and some with milking.

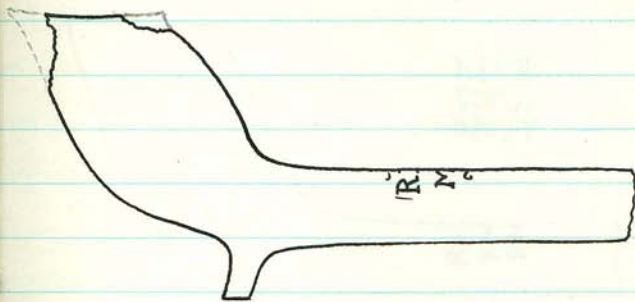


Later variety

No moulded initials, rather crude relief mark. c1720.

Richard Man

c. 1690 -

Southampton  
Portsmouth

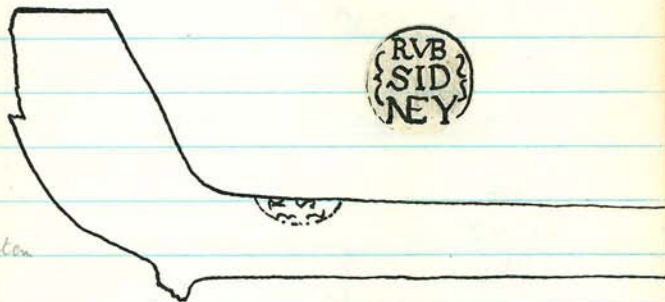
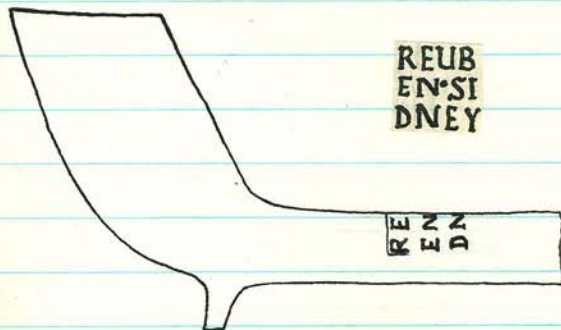
Fine polished types similar to those of  
Thomas Hunt, c. 1690. Inverse mark.

Probably RICHMAN.



Reuben SidneySouthampton1714/16

to 1748



Incuse marks. Thickish stems, medium bore.

Examples from Hythe, Winchester, Gorey Castle  
Jersey.

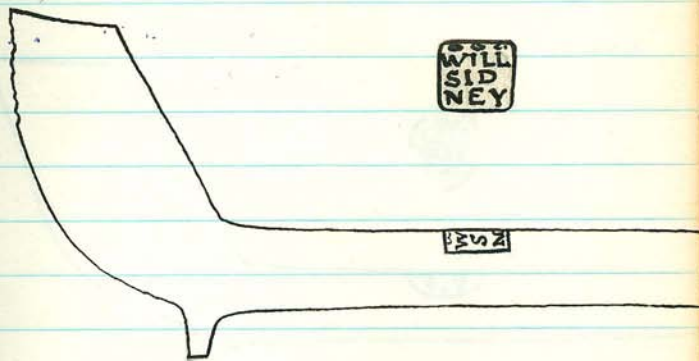
Also found at Fort Louisburg, Canada.

Same marks occur on handa Type 25 with  
moulded initials R/S.

William Sidney

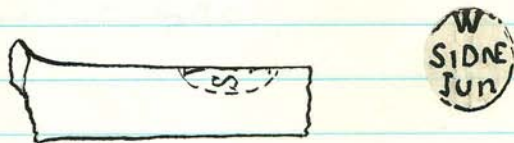
Southampton

1724



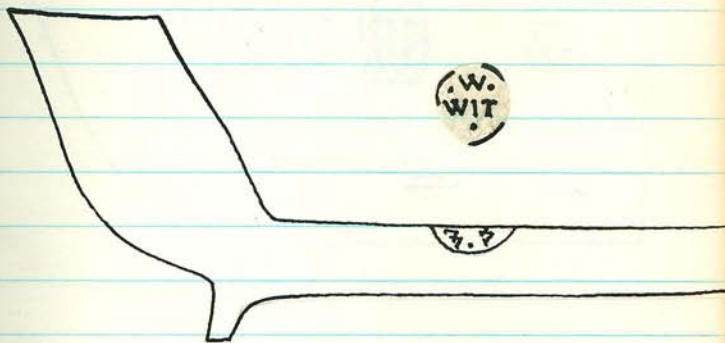
Incuse mark on stem. Thick stem, medium bore.

William Sidney Junior

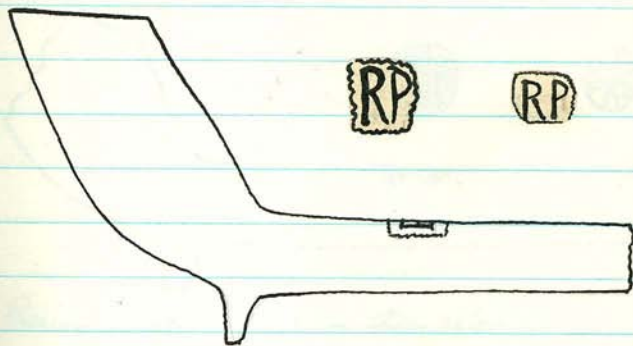


Incuse mark, slightly later. Thinner stem with narrow bore.

Probably a son.

W. Wit.Southamptonc1720-40

Incuse mark on stem. Medium stem and bore. Probably W. White (unrecorded).  
Common at Hythe.

R.PSouthamptonc 1720

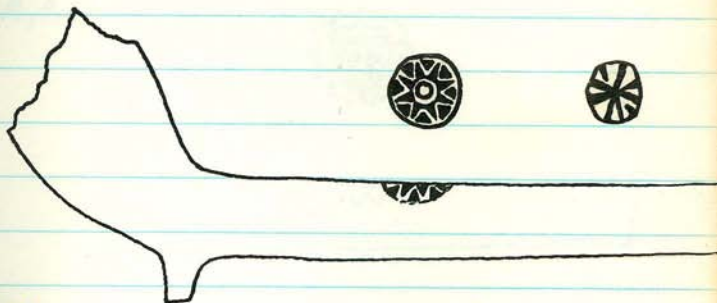
Relief marks, several different dies.

Stems thickish, medium bore.

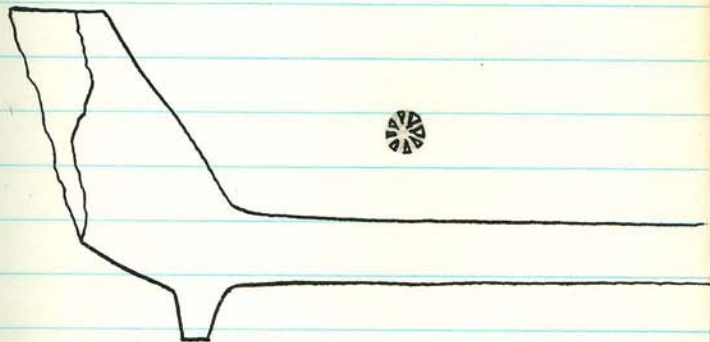
Possibly Robert Pottell of Farnham.

Numerous D flythe. But not found at Portm<sup>H</sup>,  
 where Pottell appears to have used Richard  
 Houris's <sup>Kills</sup> up to c. 1720-30.



Wheel or Star marksSouthamptonc1720-40

Relief marks. Thickish stems/bores.



Later example, c1750. Thinner stem etc.  
Incuse mark.

Nathaniel Rogers.

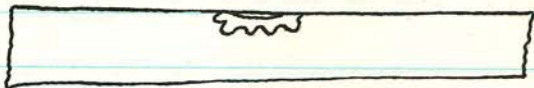
Lymington

1709

Southampton?

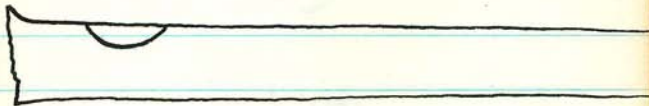
61740

(Hythe)



Incuse mark in scallop frame. Medium  
stem with narrow bore.

~~Unrecorded~~. Also Southampton Museum.

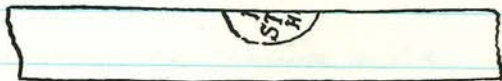
Unknown makerSouthampton  
(Hylthe)c 1700-20

Relief mark. Thick stem, wide bore.  
Same mark, River Avon, Sarum 7.77.

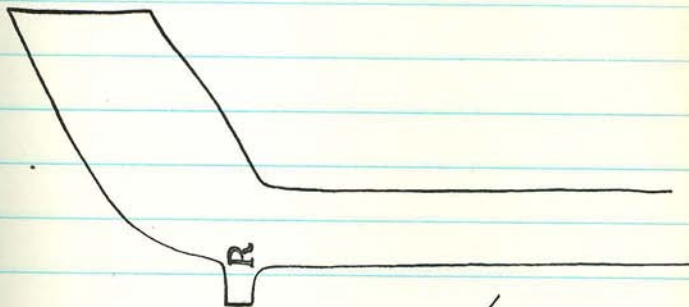
R. Stephens

Southampton  
Portsmouth

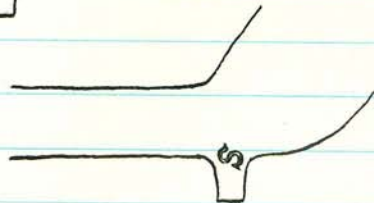
c1720-40



Increase mark. Thirkish stem, medium bore.



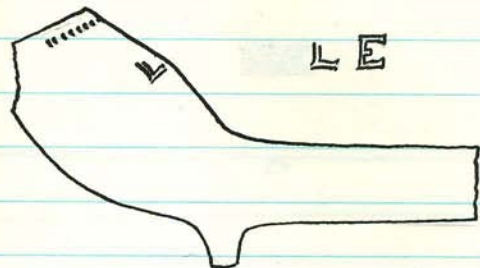
This type  
c1700-20, may  
be same maker.  
(Oyster Street)





BrownSouthampton41720-40

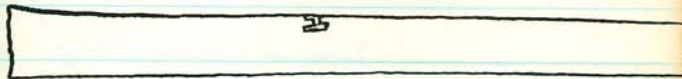
Medium stem/bore. In case mark.  
 Probably Roger Brown. (See page 63)

L. ESouthamptonc1650

Probably Lluelin Evans, Free. of Bristol 1661.  
 In case initials on back of bowl.

HKCSouthamptonc1750-

HKC



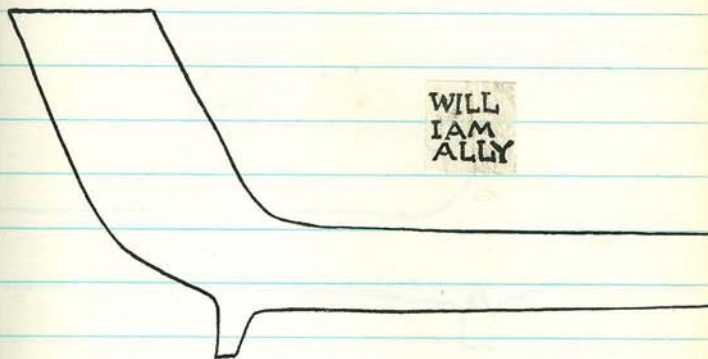
In case initials. Thin stem, names bore.

Three letter mark, unknown maker.

William Ally

Newport I of W.

c1720



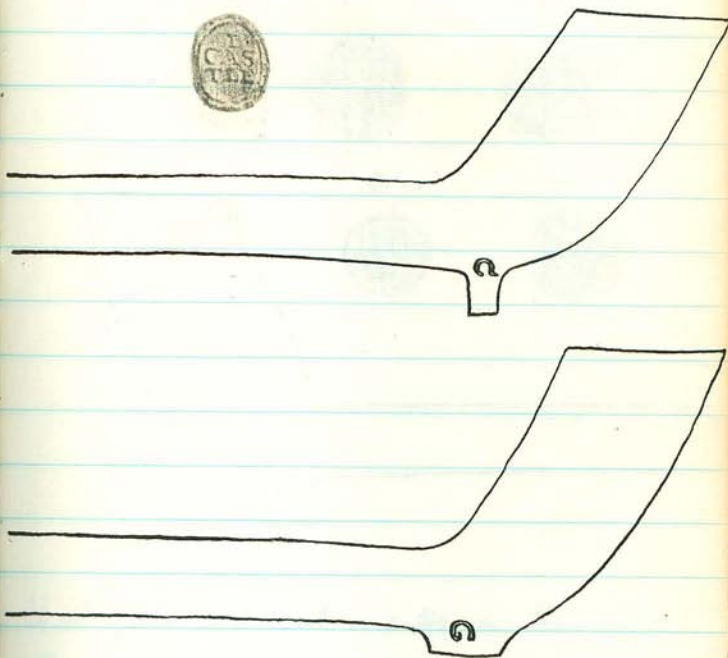
A typical Southampton type pipe, with large bowl and long spur, almost identical with contemporary ones by Reuben Sidney and Roger Broune, probably from the same mouldmaker. Mark stamped without frame, incuse.

Examples from Oyster Street, Portsmouth.

Also Southampton Museum. (1).

This maker is recorded at Newport in 1777, far too late for these pipes



I.C.Portsmouth (I. CASTLE)c1720

This ~~workman~~ maker produced both London  
and British types with his initials moulded.  
1970: Spur type found (OS) with or without initials,  
relief stamp I/CAS/TLE on stem. Both  
types are found polished.

Richard HoarPortsmouth1715-28

1.



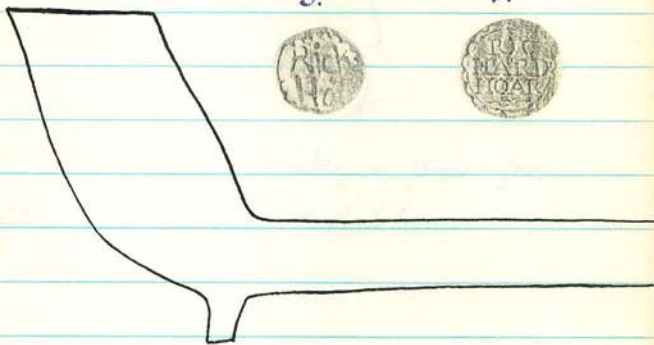
2.



3.

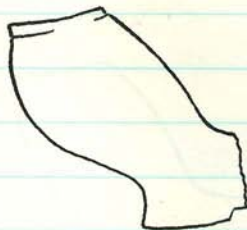


4.

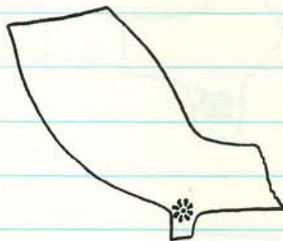


Used four different marks on this type  
 of pipe c1720. N<sup>o</sup> 1 was also used  
 later, c1750, see page 75. In N<sup>o</sup> 3 name  
 is spelt HOR.

1-2 are incuse. (1 includes Portsmouth Crest at top).  
 3-4 in relief. In N<sup>o</sup> 2 the diecutter only managed  
 to include PORT/SMO - hence the stamp was little used.

W. T.Portsmouthc 1640-

Mark in relief. Probably a pipe from  
further west. Fine polished bowl.

Star.Portsmouth (Oyster Street)c 1720-40Unknown maker.

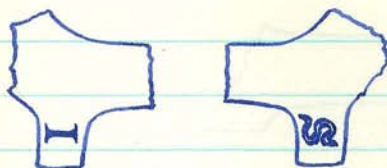
'Miniature' type pipes produced in one of the  
Oyster Street kilns.



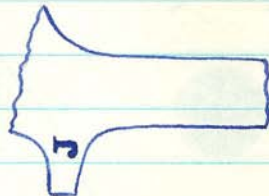
J.S

c1820-70?

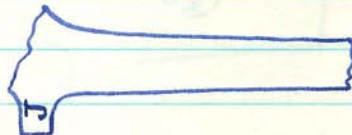
Pipes from Romney Marsh. Several Kent  
makers with these initials, c1830-60.



Early type  
with large serif  
letters.



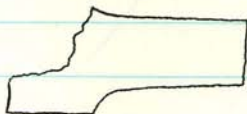
Later  
examples  
with  
smaller  
lettering.



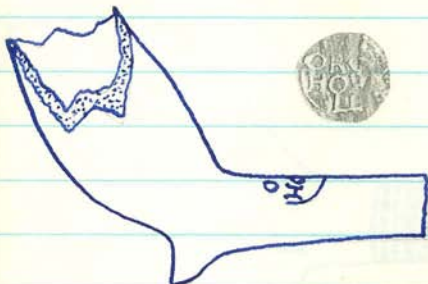
George Howell

See With book  
p. 42.

c1670+



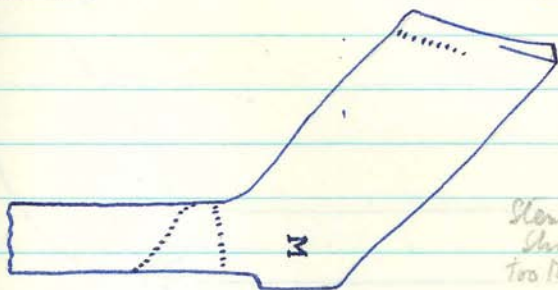
Incuse mark on heel. Heytesbury, Wilt. 10/70.



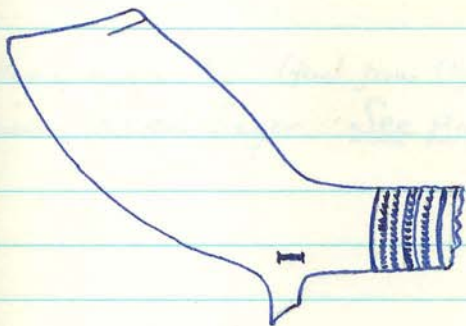
c1700-20

Devizes  
Museum

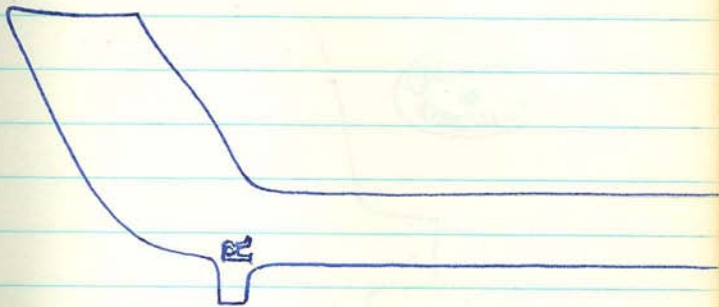
Pipe found at Steeple Ashton with stem mark. 2/75.  
(Identical to that on heel, Tamworth Museum).

I.MPortsmouthc.1690.

stem  
shown  
too thin



Two types found in kiln at Oyster Street,  
1970 with W.S pipes. Some have milling  
etc round stem, Unknown maker.  
Both are contemporary London style.

R.S.Portsmouthc.1700-20

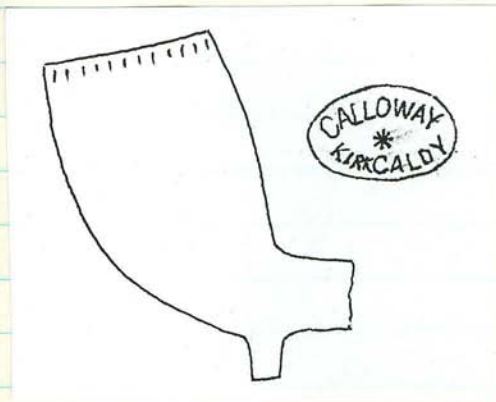
Unknown maker. Pipes (few) from Oyster Street.  
Possibly Robert Sayer. See page 85.



CALLOWAY

Kirkcaldy, Scotland.

c.1870-90



*Thick bowl, E. London 1984.*

CAUTION

0

5cm

© National Pipe Archive